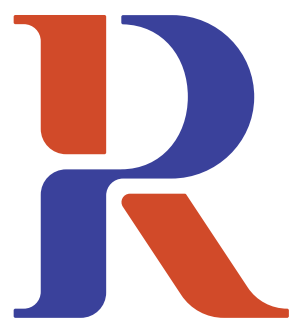


# Asset Recovery

Renmark Paringa Council's  
process to recover roads that  
were inundated by flood water

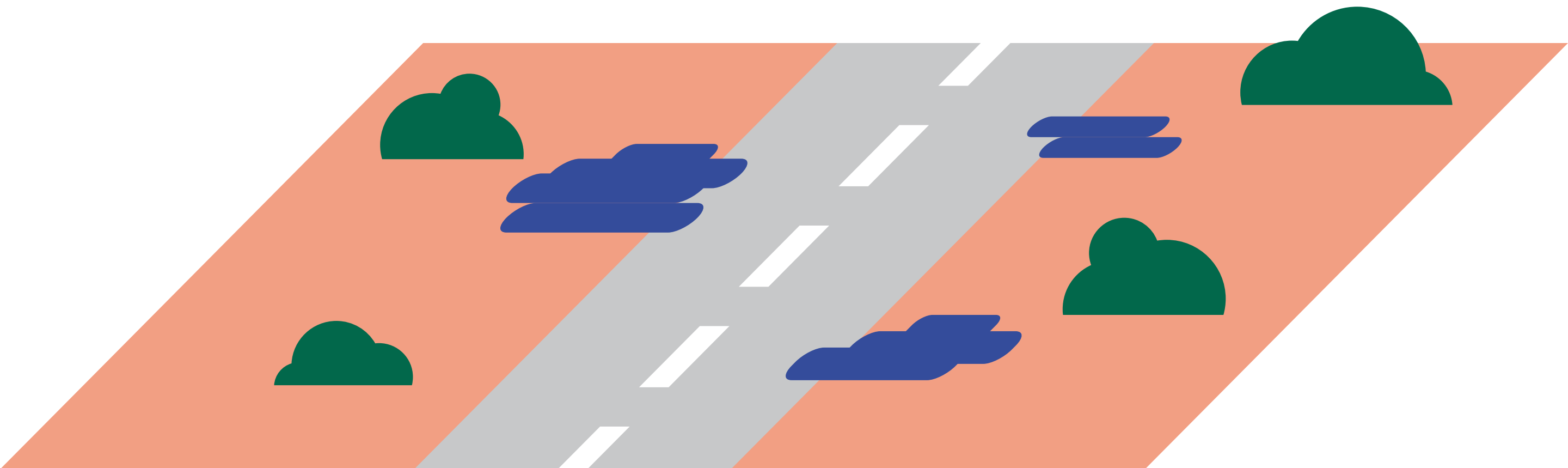


Renmark  
Paringa  
Council

# Phase 1.

**Asset surface is no longer inundated**

Water is no longer covering the asset.

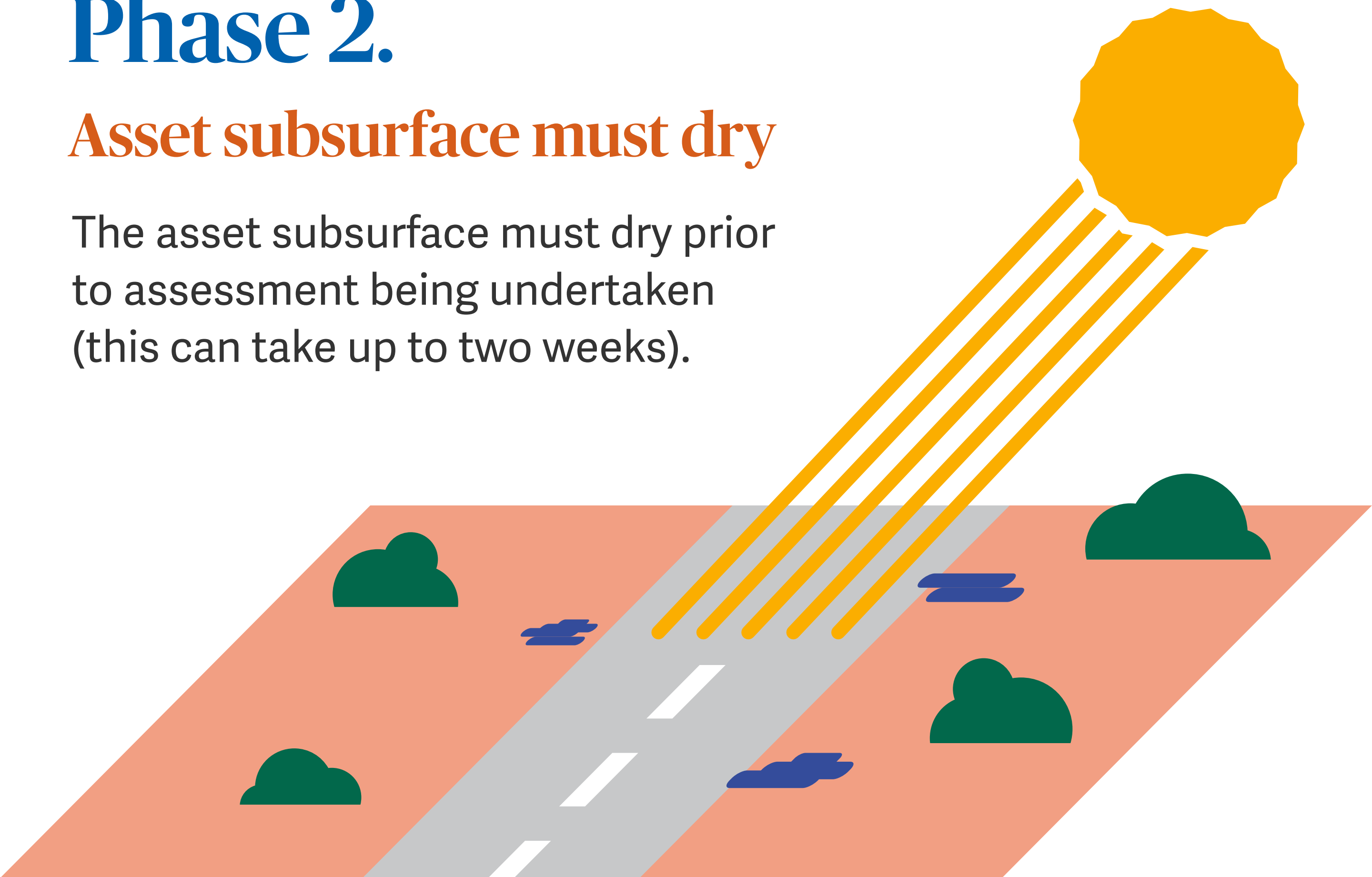


Renmark Paringa  
Council

# Phase 2.

## Asset subsurface must dry

The asset subsurface must dry prior to assessment being undertaken (this can take up to two weeks).



# Phase 3.

## Asset is inspected

Drying is complete and asset must undergo engineering inspections.

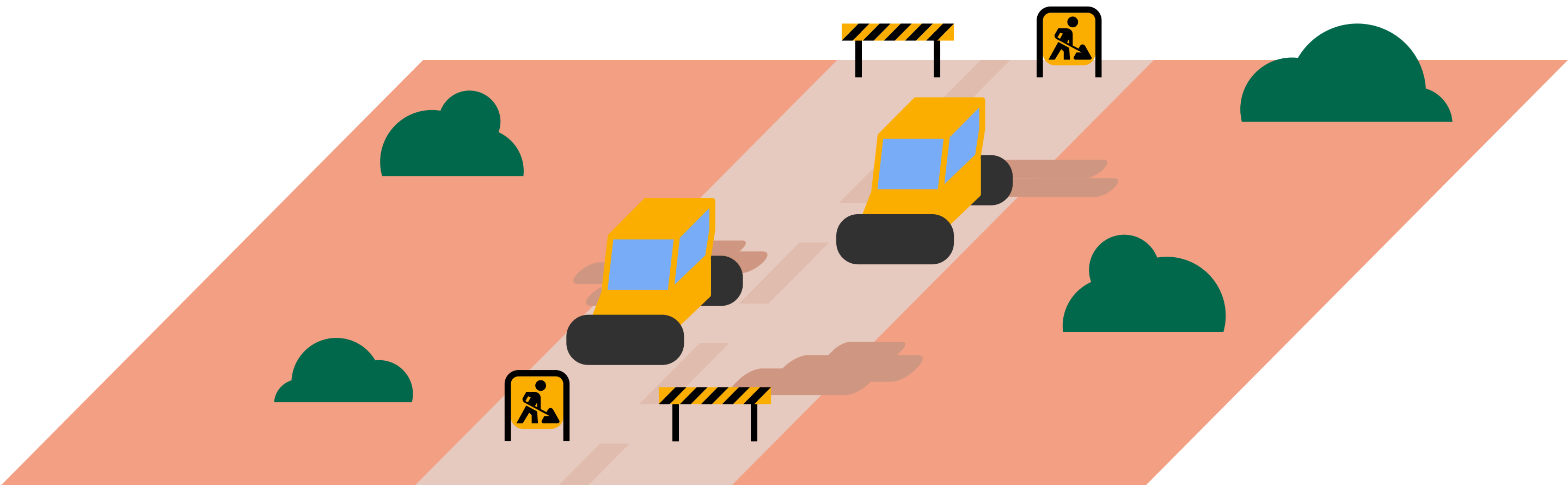


Renmark Paringa  
Council

# Phase 4.

## Remediation works

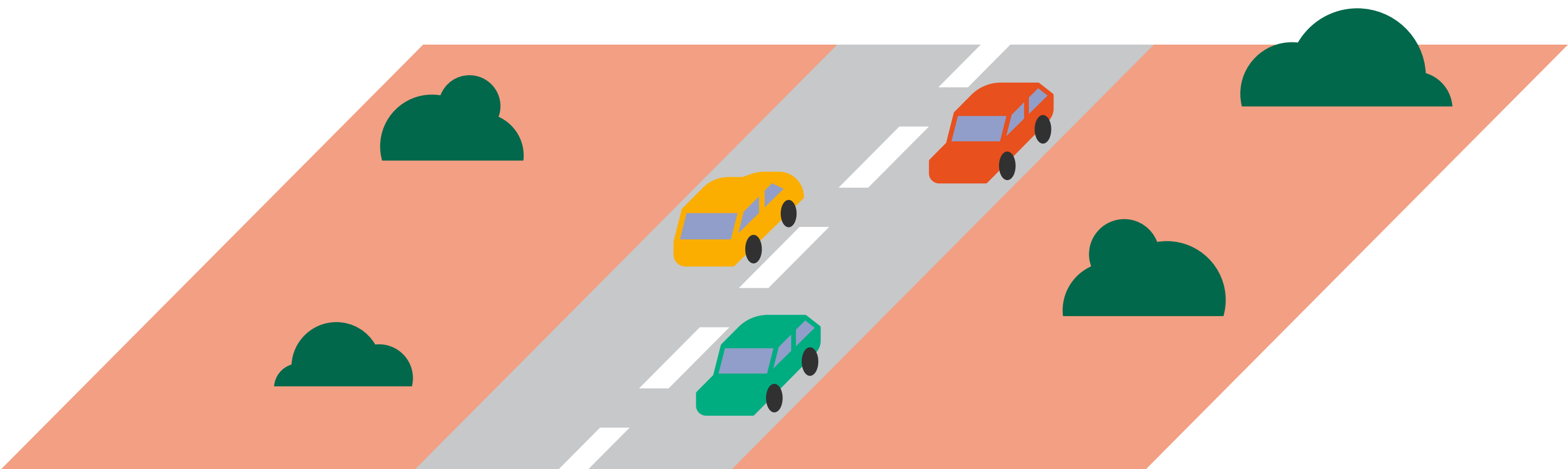
Necessary works are completed to remediate assets.



# Phase 5.

## Gradual opening to traffic

The asset is gradually opened to traffic, based on vehicle loads (regular inspections conducted throughout this phase).



# Phase 6.

## Final Inspection and opening

The asset completes a final inspection. If final inspection is passed, the asset is opened to unrestricted traffic.

