



Revive Renmark

Help shape your town!



Renmark Paringa Council have engaged urban designers Jensen PLUS to design streetscape improvement concepts for Murray Avenue (Stage 2) and the Renmark Avenue intersection (Stage 5) as part of the next stage of the 'Renmark Urban Design Framework' implementation.

We are seeking community feedback on these exciting projects and now is your chance to help shape your town.



The plans are available on Council's website, along with a link to the online survey. Want to see them in person? Representatives from Renmark Paringa Council and Jensen Plus will have a stall at the Renmark Riverfront Markets and invite community members to visit to ensure they shape the future of these exciting projects.



**Renmark Riverfront Market | Murray Avenue, Renmark.
Saturday 9 July 2022 | 9 am to 2 pm.**

Use the QR code for more information and the survey.

Revive Renmark Murray Avenue

This poster is part of community consultation for the streetscape concepts. See council's website for more information and to take the survey.

Concept 1 “Murray Boulevard”

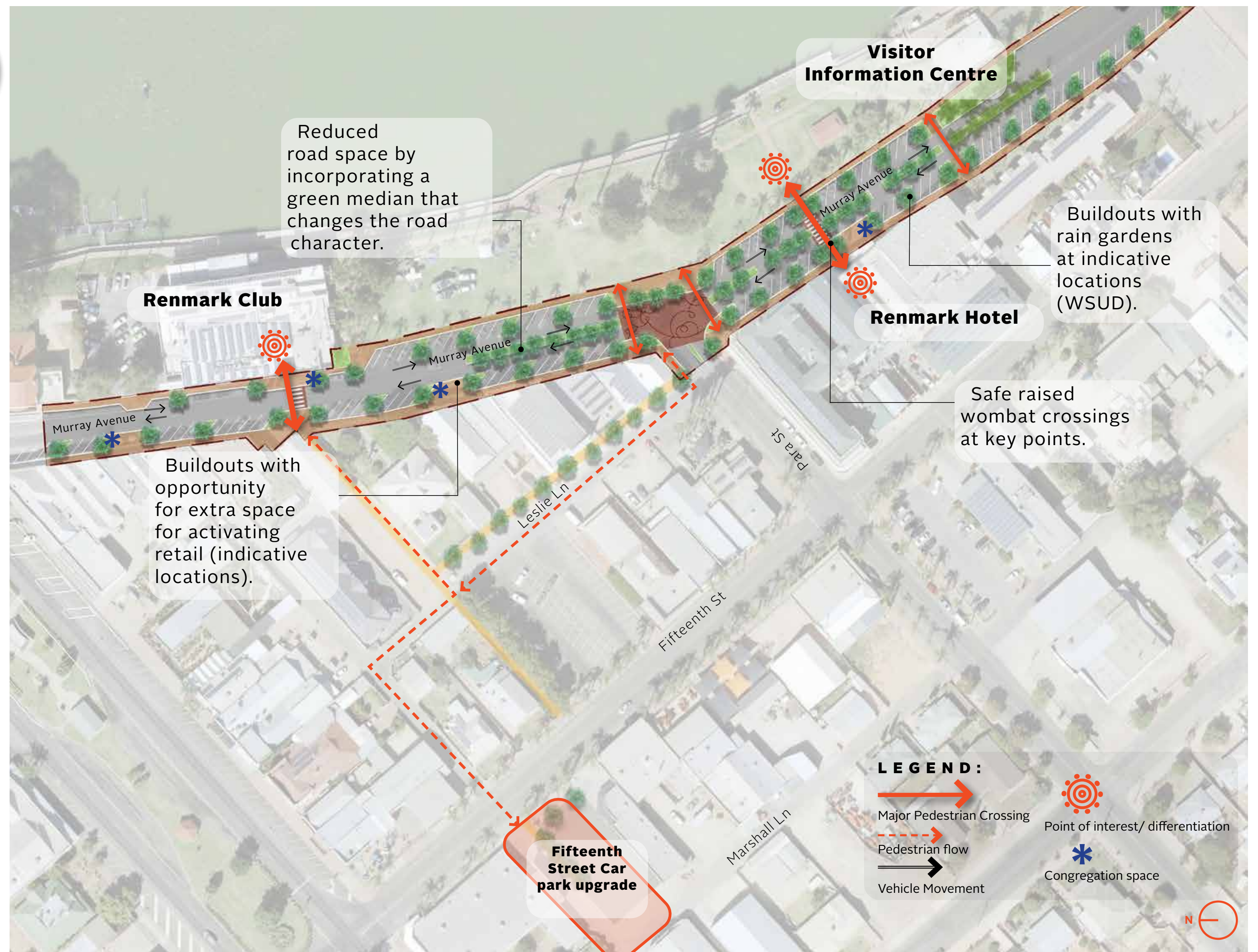


Advantages

- Safe crossing with refuge / break in the median, equitable access
- Less bitumen
- Creates a green boulevard with connected canopies
- BIG change to street character

Disadvantages

- No cycle path
- Less ability to circulate



Concept 2 “Green Promenade”

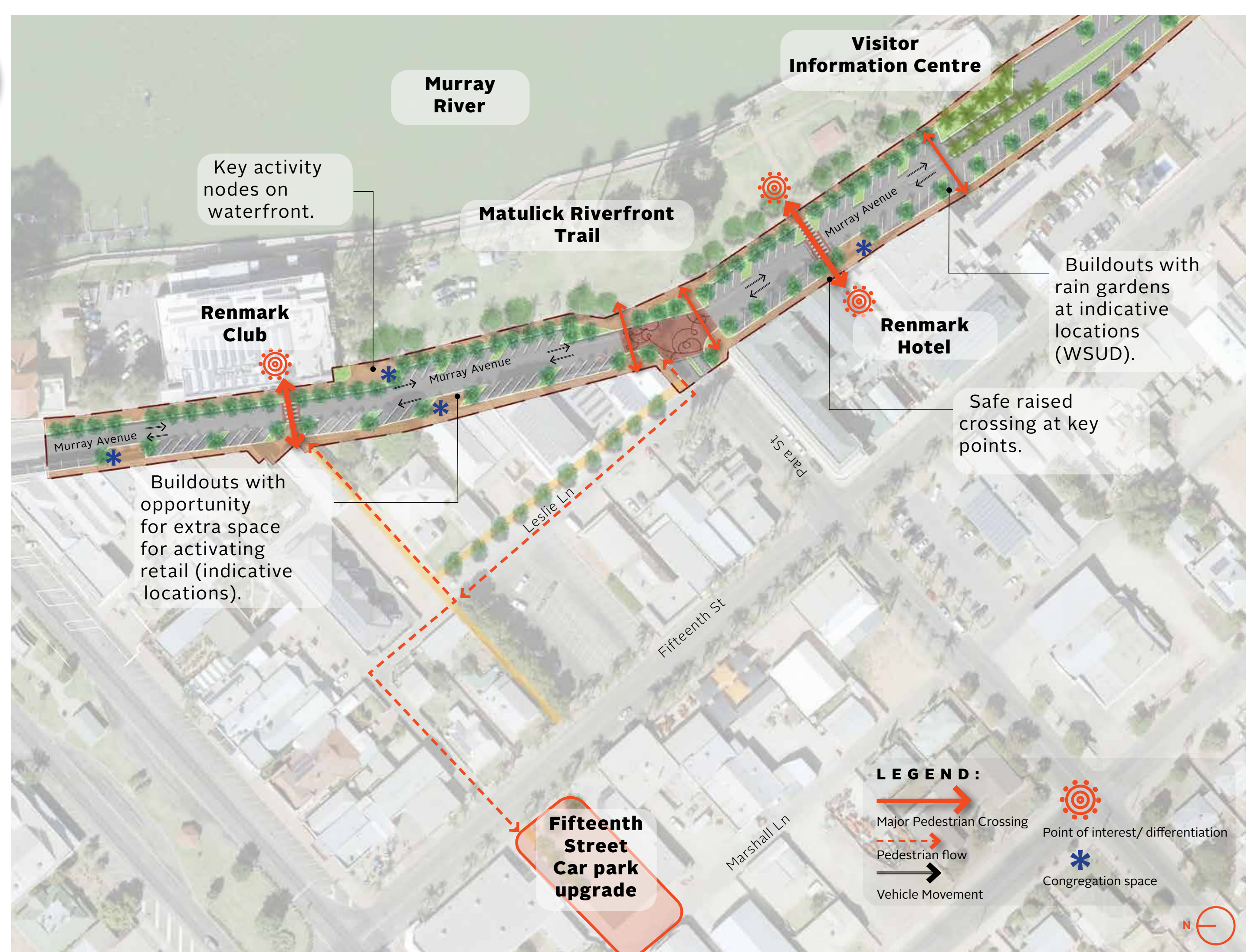


Advantages

- Improve activity along the riverfront linear park
- Provide a 3m shared footpath (pedestrian & cyclists)
- Connected shade and canopies along the Promenade

Disadvantages

- Difficult for pedestrians to cross mid block (as existing)
- Potential for more extensive kerb and drainage changes

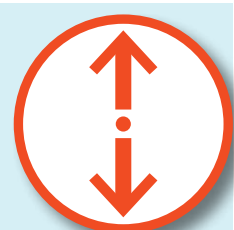


Revive Renmark

Renmark Avenue Intersection

This poster is part of community consultation for the streetscape concepts. See council's website for more information and to take the survey.

Concept 1 “Central Crossing”



Advantages

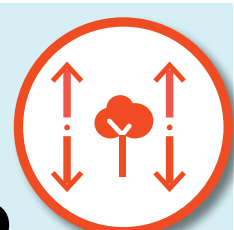
- Clear connection between Riverfront and central median / public toilet
- Central safe crossing if signals or wombat is installed
- Improved visibility to park across the road

Disadvantages

- Doesn't connect to the existing park entries / levels
- Doesn't connect to pedestrian desire lines on Renmark Ave / Murray Ave footpaths
- Changes required to completed precinct (rework) and near tree



Concept 2 “Boulevard with two crossings”

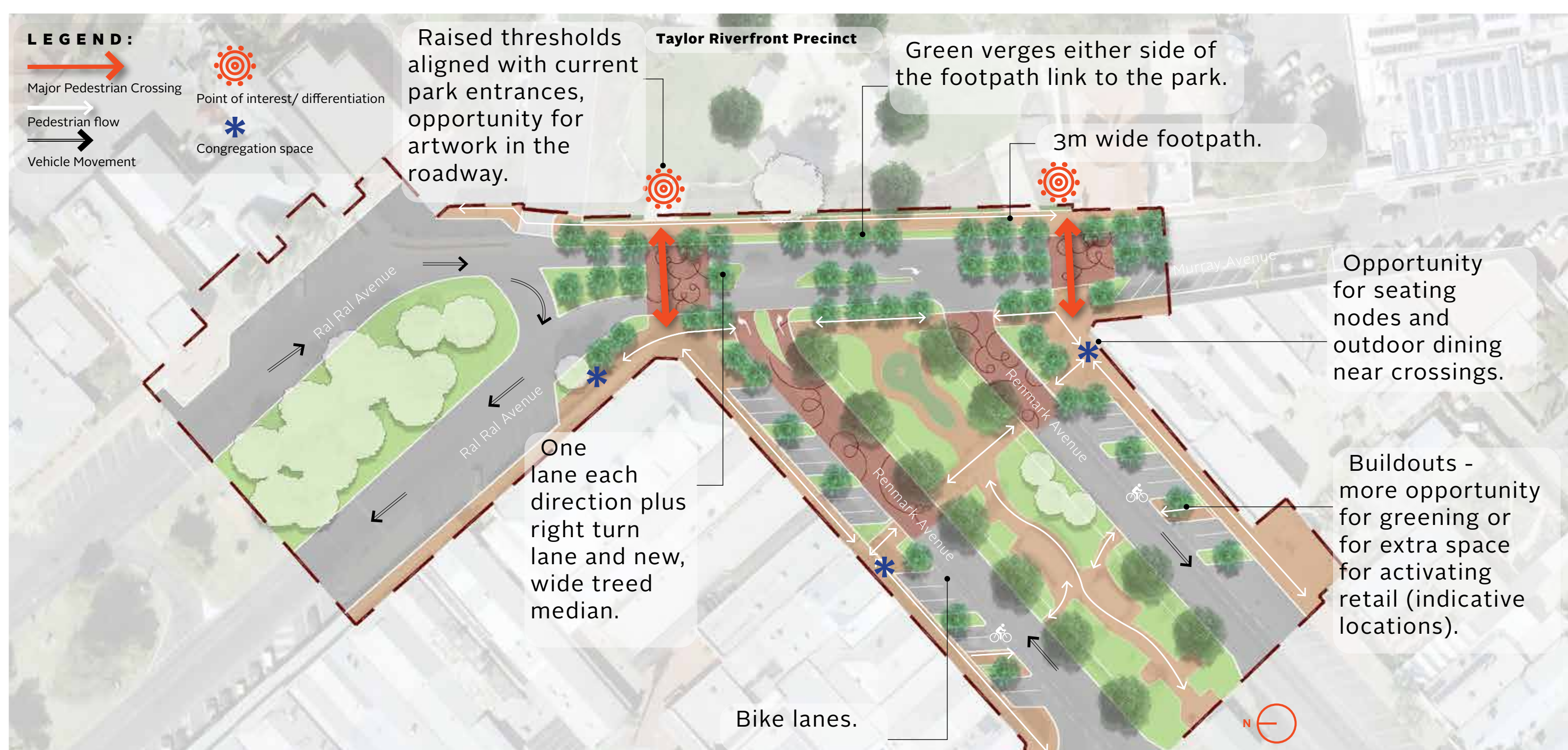


Advantages

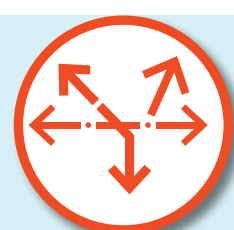
- Establish a green boulevard and strong median
- Encourage exploration of shops in Renmark Ave
- Safer crossing for cyclists
- Connected shade and canopies
- Crossings align with pedestrian desire lines and existing park access paths

Disadvantages

- Less direct connection with existing toilets



Concept 3 “Contemporary Shared Space”

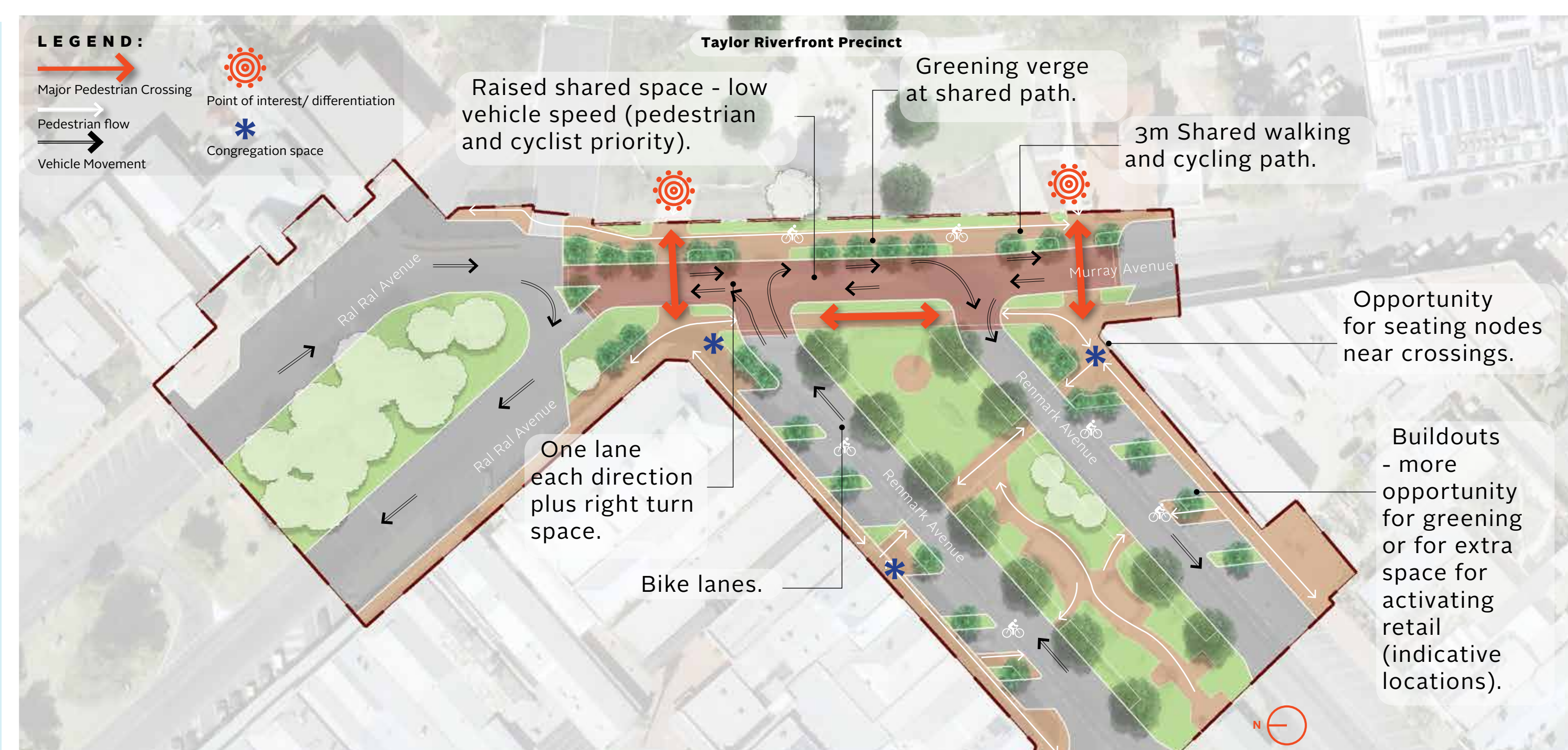


Advantages

- Much slower vehicle speeds
- Pedestrian friendly area and modern approach
- Encourage exploration of shops in Renmark Ave
- Connected shade

Disadvantages

- Less direct connection with existing toilets
- Shared space benefit not maximised at an intersection



Revive Renmark Design Elements

This poster is part of community consultation for the streetscape concepts. See council's website for more information and to take the survey.

Leafy Boulevards + Medians



BRING STREETS TO LIFE

BRING LEAFY LOOK + FEEL TO RENMARK



INCREASE GREEN AREA + CANOPY COVER



SOFTER + MORE ATTRACTIVE STREETS



Footpaths + Activity



SHARED ROADS



PLACES TO SPEND TIME ALONG FOOT PATHS



DESIGN ELEMENTS UNIQUE TO RENMARK



SEATING AND GREENING



Revive Renmark Design Elements

This poster is part of community consultation concepts. See council's website for more information and to take the survey.

Safe Crossings + Walkability



SAFE + WIDE CROSSINGS



ARTIST DESIGNED DURATHERM STREET PATTERN



CONTINUOUS FOOTPATHS OVER ROADS



BUILD OUTS + TRAFFIC CALMING



Street Life + Tourism



ADAPTABLE SPACES FOR EVENTS



OUTDOOR DINING



STREET BUILD OUTS AND POP UP SPACES



PLACES FOR PEOPLE TO SPEND TIME

