



Renmark Paringa Council

Media Statement

DATE: 26 October 2022

Renmark Paringa Council – Flood Response

Engineering officials on behalf of Council have been on site assessing the levee banks surrounding the townships in the Renmark Paringa area this week.

A third of the levee network surrounding Renmark has now been assessed which allows for Council to direct resources into areas which have been identified as priority based on the engineers' recommendations. Council is confident that the whole levee network will be assessed by the end of the week.

Council is continuing remediation works at the Renmark Hospital levee bank. This levee bank will require the top layer of material to initially be removed in order to build up and strengthen the front of the structure.

This levee remediation work has been engineered in conjunction with the Department for Environment and Water (DEW).

A second crew will be deployed to Hale Street levee bank by the end of today to commence remediation works on some areas within that levee which have been identified as being required. Council would like to advise the community to be aware of heavy machinery in these areas during this time.

Further crews will be deployed to other areas within the levee network when remediation requirements have been identified.

Council has received five industrial-sized water pumps which will be located in low lying areas within the Renmark area, specifically at: 17th Street, 19th Street South and North, 20th Street and 21st Street. Please see below map for map locations.

Once these pumps are deployed, the stormwater outlets that flow into the River Murray and Bookmark Creek will be closed off. This action is necessary to prevent flooding from backflow up through the stormwater network as the outlets to the River become inundated by higher flows. Council again would like to ask the community to be patient during this time. We anticipate more rain in the coming months and when these pumps are required for action, our staff will act quickly to protect Council infrastructure and properties.

If community members require assistance during and after extreme weather events, the SA State Emergency Services are the key organisation to contact.

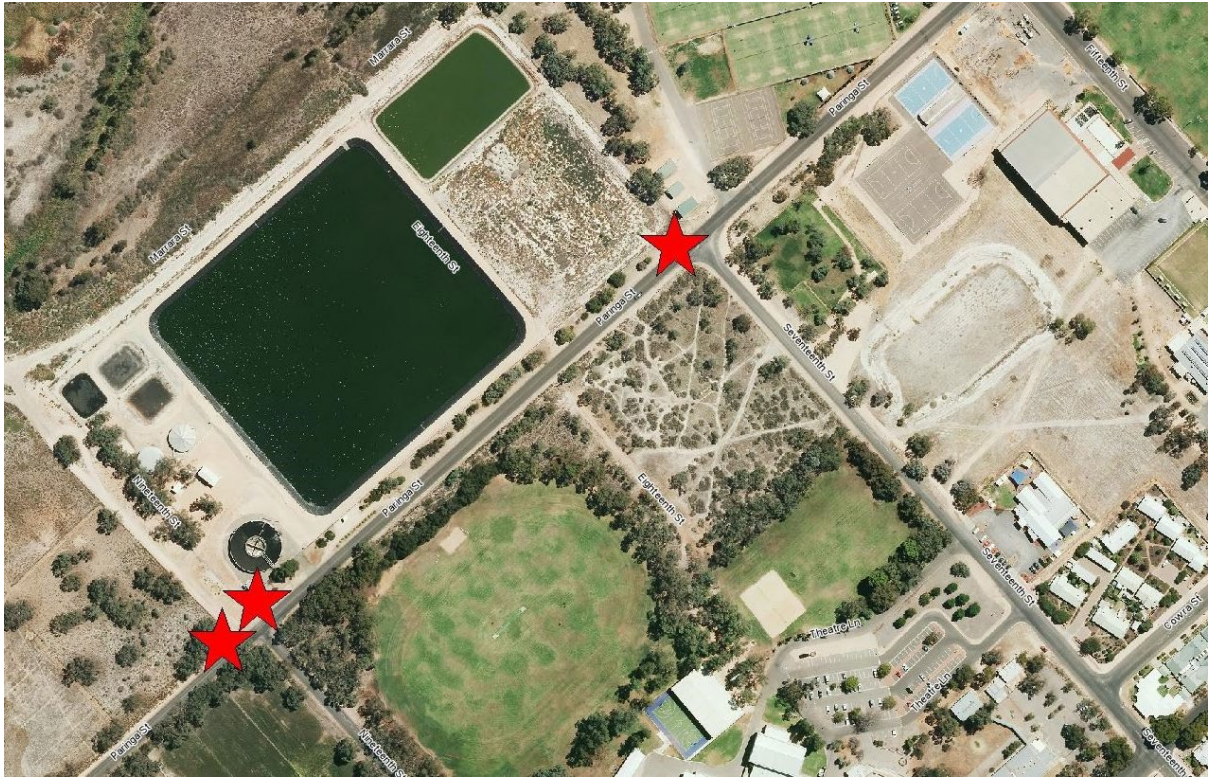
To stay informed on Council's response to the rising River Murray levels, please visit our website, titled '[River Murray Flood Advice](#)' which contains all Council updates and links to relevant State and Federal Government information sources.

All media enquiries can be directed to: Tony Siviour, Chief Executive Officer on 8580 3000 or email council@renmarkparinga.sa.gov.au

Committed to a sustainable future



Renmark Paringa Council



Pump locations (Northern Renmark Township)



Pump locations (Southern Renmark Township)

Committed to a sustainable future

