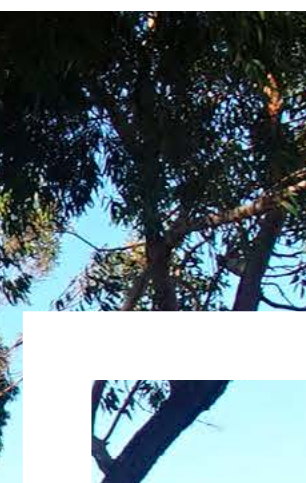


Paringa Place Plan

Main Street Improvements



Prepared for Renmark Paringa Council

JENSEN
PLUS

Planning
Landscape Architecture
Urban Design
Social Planning

Contents

1. Introduction + background	4
2. Existing conditions	5
3. Paringa Place Plan	6
4. Ten placemaking projects	7
5. Engagement summary	12

Revision number 6
29th August 2022

Produced by Jensen PLUS
Level 1, 21 Roper Street
Adelaide 5000 South Australia
08 8338 5511
admin1@jensenplus.com.au
www.jensenplus.com.au





**Paringa is a beautiful town
on the banks of the River
Murray. It is a gateway
to South Australia from
Victoria, with interesting,
historic landmarks and a
community feel.**

**The Historic
Paringa Bridge**



1. Introduction + background

"Paringa", an Aboriginal derivative for "big bend in the river" is a Riverland township worth visiting and exploring.

It is famous for the fascinating bridge that is raised twice a day to allow river traffic to pass through to nearby Renmark as well as the orchards, vineyards and almond-growing industries.

The Paringa town centre comprises of a small main street (Murtho Rd) located off the Sturt Highway that includes a combination of commercial and residential properties. Shops located here include the Paringa Bakery & Cafe, Paringa Hotel & Motel, Grocer and Post Office.

These important community places are positioned around a wide, leafy median that contains a small playground, water feature and "opera house" shelter structure. There are public toilets close by.

Project objectives

Jensen PLUS are working with Renmark Paringa Council and the community to develop ideas for improving the look, feel and functionality of the Paringa main street environment - to make the public realm more appealing to stop and explore, more beautiful, safe and functional.

In early 2022 the Paringa community were invited to comment on what improvements they would like to see to beautify the main street area. Jensen PLUS also visited Paringa and undertook site analysis observations that have also informed the work.

A draft version of this plan was made available to the community in July/August 2022 with strong support received. A summary of feedback is provided in the Appendix.

This "Place Plan" compiles the feedback received and site analysis into ten key improvements for community consideration.

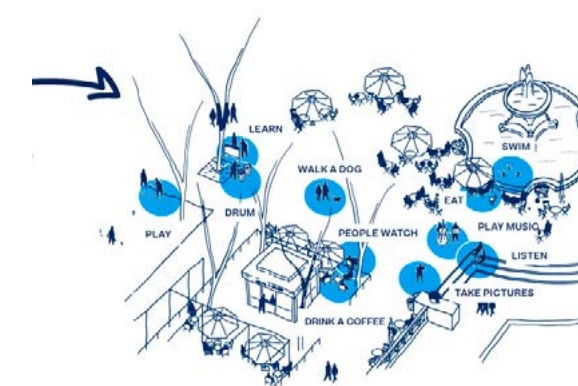
Placemaking + the "Power of 10"

The Power of 10 idea by Project for Public Spaces (USA)

The idea behind this placemaking concept is that places are most successful and active when users have a wide range of reasons to be there. Often 10+ activities is said to be ideal!

Reasons to be in Paringa's main street open space might be to play with children, admire the landscapes, read about local history, sit and eat lunch on a travel break etc.

Ideally, some of these activities will be unique to that particular place, reflecting the culture and history of the surrounding community. Local residents who use this space most regularly will be a good source of ideas for which uses will work best.



PLACE
10+ things to do
(layered to create synergy)

**Project
for Public
Spaces**

Source: Project for Public Spaces

2. Existing conditions

Paringa main street is a mix of community-focused services and visitor amenities/ and curios in a rural environment. There is a mix of traffic with heavy vehicles sharing the roadway space with people parking and crossing to access the shops, hotel and wide, green median for play and respite.



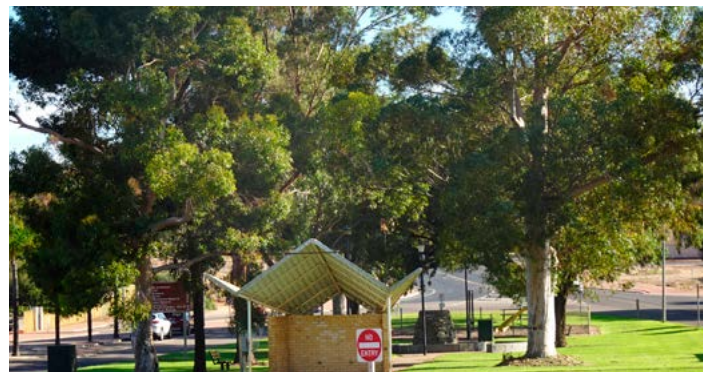
The Black Stump of Paringa in the Main Street is an eclectic point of interest.



Public toilets are located in close walking distance to Murtho Rd but are dated and unsigned.



The playground requires updating for safety and to become more appealing as a meeting place. It sits within the shady Murtho Rd median. There are poor connections.



The median contains a grid of mature native trees, lawn, a disused visitor information bay and some seating.



Sturt Hwy



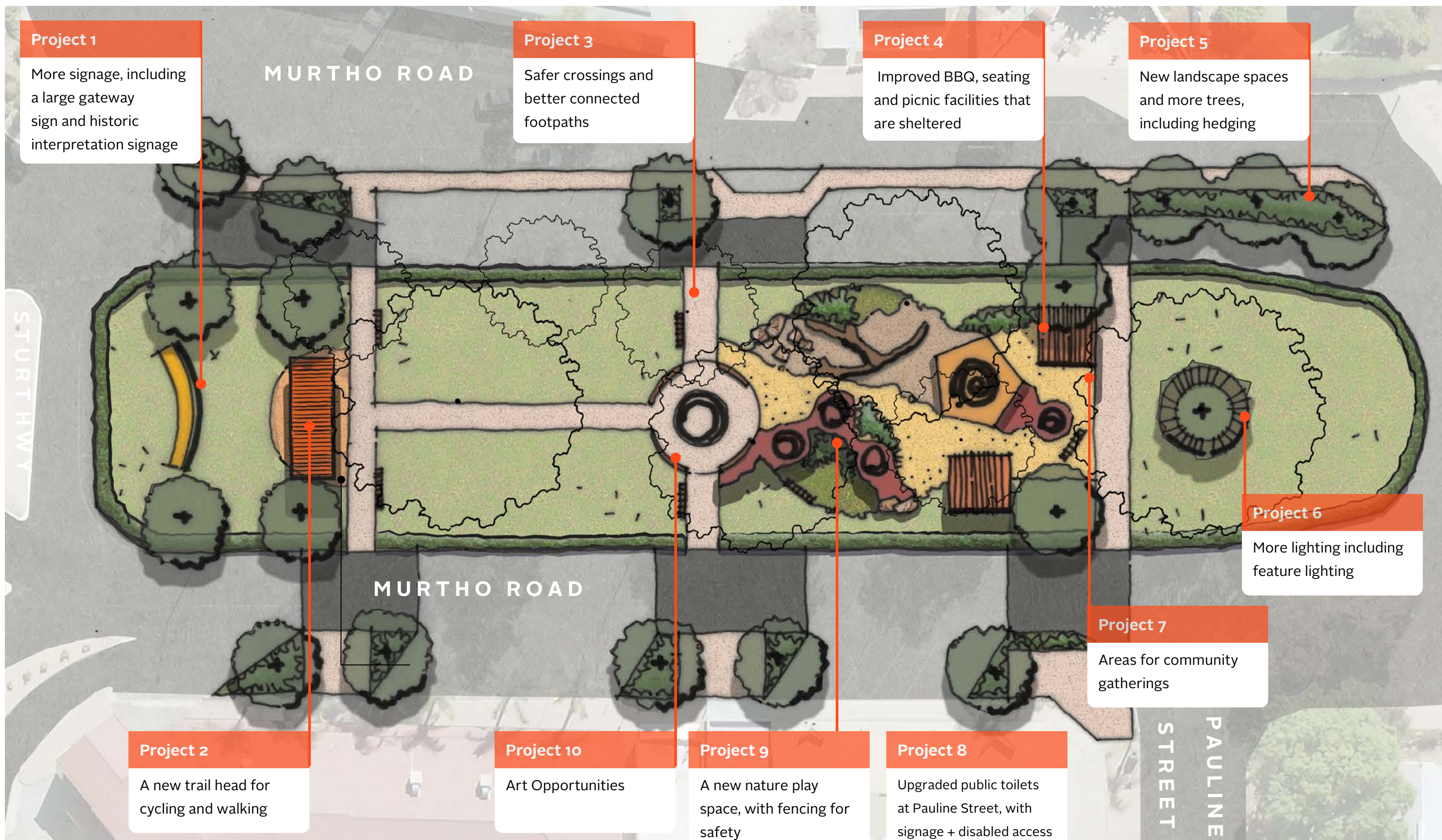
Multiple traffic lanes, parking and little to no understorey planting has resulted in a hard pedestrian environment.



Silo artwork is colourful and intriguing.



The Paringa Motel is located at the intersection with the Highway. The Hotel is a busy community hub.



Paringa Place Plan Ten placemaking projects

August 2022
P1222
1:400@A3



4. Ten placemaking projects

Project 1. More signage, including a large gateway sign and historic interpretation signage



A large new gateway sign is proposed for the entry to Paringa in the centre of the median. In addition, a series of interpretive and location signs should be incorporated to advise of the interesting features and history of the township.



Gateway Signage Imagery

Project 2. A new trail head for cycling and walking



The location of the "Opera House" structure is perfect for a new trail head for cyclists and walkers exploring the Riverland. New signage, seating, water fountain and a shelter could be located here.

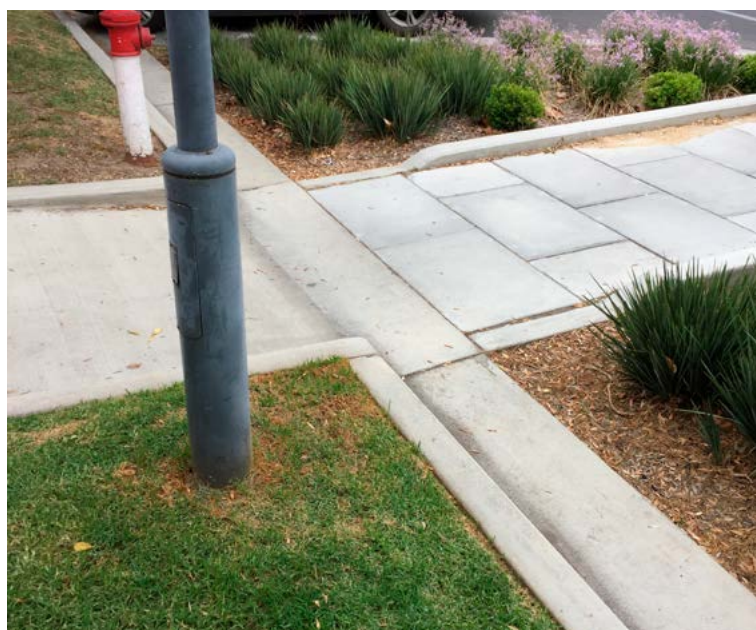
This sheltered area could also be used to connect to power and water for community events, adjacent to the green open median space. Designs should be integrated with the gateway signage structure (Project 1).



Trail heads throughout Qld and NSW cater extremely well for tourists and residents and link to well utilised pathways with plenty of amenities.



Project 3. Safer and better connected footpaths



New footpath connections are illustrated in the Place Plan to provide more equitable access into and around the green space.

Footpath "build outs" between car parks and at corners have also been provided to shorten the distance required to cross the roadway, slow vehicle traffic and to create additional space in the verge / footpath.

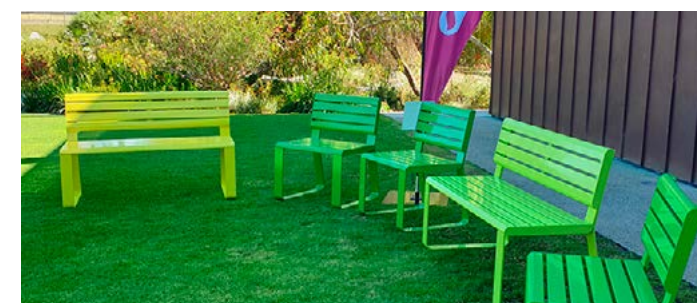
A new surface like interlocking pavers or printed bitumen could be considered for within the Murtho Road roadway to assist with traffic calming, helping to slow vehicles in the main street (an important issue raised in community feedback).

Retrofitted build outs can add greening and provide safer crossings for pedestrians in streetscapes.

Paths through the median could be paved or comprises of compacted quarry rubble.

Different road pavements signal to drivers that the area is different.

Project 4. Improved BBQ, seating and picnic facilities that are sheltered



The space would include sheltered BBQ facilities, integrated with the design of the area. These could become a fantastic community meeting place with power and water available as well as catering to travellers resting along their journey through the Riverland.

Lighting could be incorporated into the shelters to improve functionality of the entire green median space.

There would be other seating located throughout the green space with the potential for traders to add even more temporary seating when required.

Project 5. New landscape spaces and more trees, including hedging

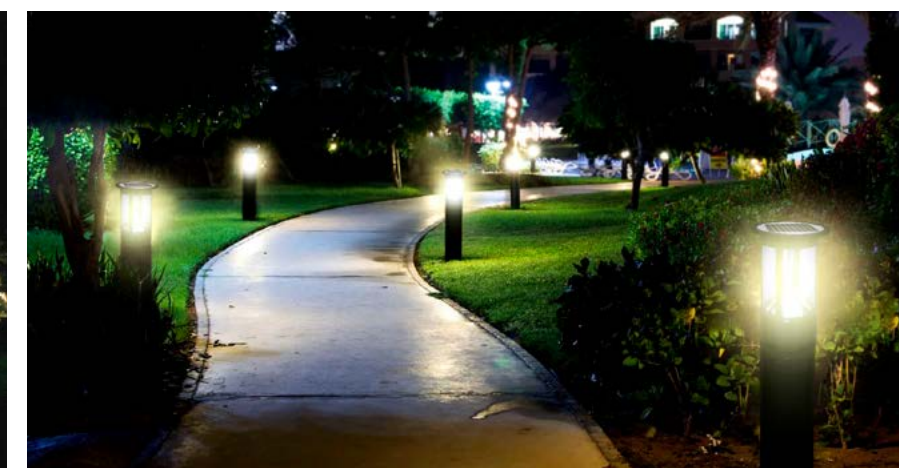


More trees have been included in the Place Plan, to shade footpath and parking areas and to strengthen the "grid" of mature trees that line the green space. The entry from the Sturt Highway is quite dry so this is proposed to be greened also to create a more attractive, eye catching and welcoming gateway to Paringa. Native shrubs could be combined with exotics (such as roses) to reflect the broader township character and utilise existing plantings. Opportunities for increased tree and shrub planting beds include:

- _ In new build outs adjacent parking bays
- _ Around outdoor dining spaces
- _ In existing hard surface verges if pavers were removed
- _ Around the nature play space sculptural features
- _ Around the median (as a hedge)
- _ In the turfed median space
- _ On private verandas or in window boxes to lend greening and colour to the public realm.



Project 6. More lighting including feature lighting



New lighting could include uplighting of trees, festoon lighting over the playspace, lighting to seats or pathway bollard solar lighting.



Project 7. Areas for community gatherings



The addition of shelter, lighting, power and water to the park will provide the perfect setting for community gatherings and smaller parties for Paringa residents. The fountain water feature may form a focal point with surrounding park as a backdrop.

The Place Plan also shows an extended area of median for extra public space (instead of bitumen). These kinds of improvements to kerbing and road pavement could be scheduled when road maintenance or other major work is programmed in the future.

Project 8. Upgraded public toilets, signage + access



There are cost efficient toilet facilities available that would be suitable to replace the existing toilets.

Accessible public toilets are an important feature of public spaces, particularly in a regional area. The existing public amenities are located at Pauline Street, in close walking distance to Murtho Rd and adjacent to car parking.

The toilets are dated, not well sign posted and are also not accessible to disabled users. Significant work would be required to upgrade these facilities to meet current standards and to be inclusive. A new "off-the-shelf" toilet building is proposed to replace the existing toilet building.



The existing toilet block could be refreshed but would not contain the required disability access or ambulant facilities. New signage is also required so visitors to the space know where to go.





Project 9. A new nature play space



Paringa Residents recognised the requirement for improved play facilities within the main street. This is seen as an important feature regardless of other play facilities within the town. Catering to visitors, and those visiting the bakery this play space could offer a different play experience by being based mainly around natural elements and sculptures.

It offers some green respite within the town centre, where children can stretch their legs and is an attractive place to catch up with friends for lunch, coffee or a birthday party.

It is envisaged that the play space would be fenced for safety (as well as a new hedge around the median), have plenty of seating, shade and landscaping throughout.



Examples of nature play spaces incorporating sculptural works.

Project 10. Art Opportunities



With the play space sitting within the context of the tall trees the play area could meander throughout the median and incorporate the existing fountain sculpture as an object to explore.

Other opportunities exist to incorporate art elements within the park and nature playspace that might be interactive and engaging for users.

Local and colourful art features will further enliven an already lovely place for Paringa!

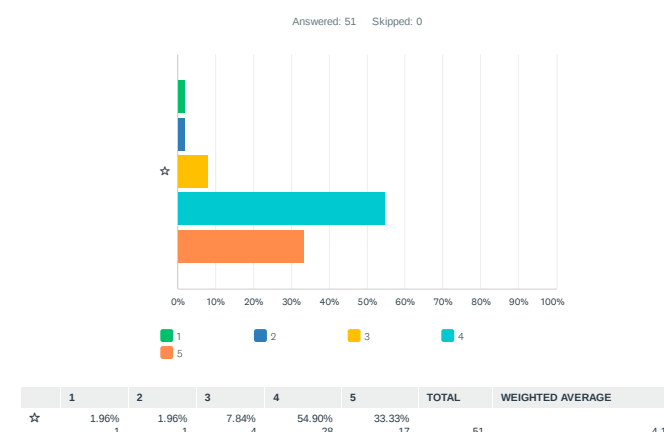


Lie of the Land Artwork in the City of Adelaide, Wirranendi, Park 23

5. Engagement summary

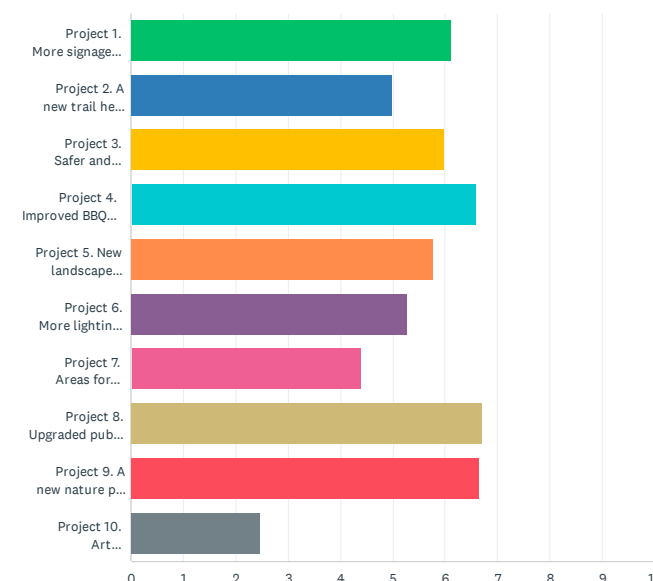
A draft version of this plan was made available to the community and an online questionnaire undertaken for two weeks in August 2022. More than 50 surveys were completed.

How would you rate the the concept plan for Paringa Main Street as presented?



88% of respondents rated the draft Place Plan as high or very high satisfaction.

Please rate the 10 projects identified in the Concept Plan in order of your preference.



Priority placemaking projects were:

- _ Project 8. Upgraded public toilets, signage + access
- _ Project 9. A new nature play space
- _ Project 4. Improved BBQ, seating and picnic facilities that are sheltered
- _ Project 1. More signage, including a large gateway sign and historic interpretation signage

Other feedback to inform detailed design and implementation of the Place Plan

- _ Ensure new play area is fenced (this was included in the plan but has been strengthened).
- _ Strong support for new toilets with most feedback for new facilities at the present location.
- _ Improve parking for caravans and trailers.
- _ Comments about vacant commercial site on Sturt Highway (out of scope).



Thank You

